

Facing an Ofsted inspection?

The NUT has been successful in gaining assurances from Ofsted on the new framework, particularly on the key issues of attainment and achievement and safeguarding.

Safeguarding

On safeguarding, Her Majesty's Chief Inspector, Christine Gilbert has confirmed that "safeguarding grades of satisfactory or good do not limit the overall effectiveness to those grades... a school judged to be satisfactory in its safeguarding arrangements may still be judged to be outstanding...".

Some members had told us that, despite their school having met the statutory requirements for safeguarding, it had been downgraded to 'inadequate'. Ofsted are clear that such a judgement should not be made in those circumstances.

Attainment and achievement

On attainment, Christine Gilbert has said: "A school may be judged to be outstanding if attainment is average, or even low, provided that learning and progress are outstanding... all schools, whatever their circumstances, have the opportunity to be judged outstanding for their overall effectiveness... There is nothing in the evaluation schedule or the guidance we have issued to inspectors which suggests otherwise."

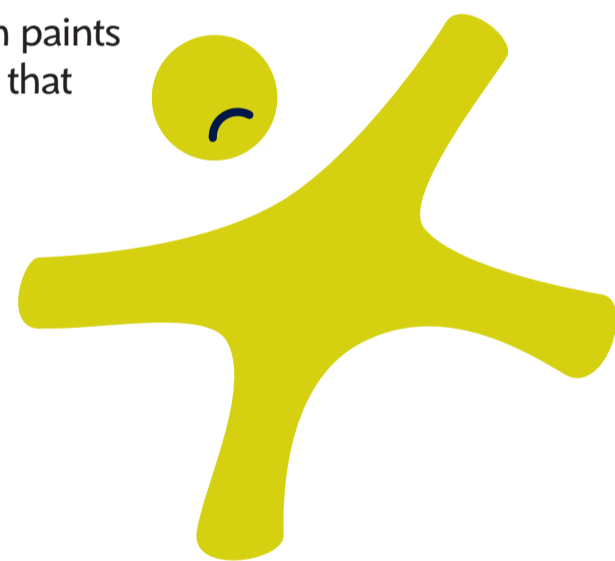
Members and school representatives should contact their division/association or their regional office if they do not think that inspectors are taking sufficient account of children's actual progress in their learning.

Early Day Motion (EDM)

It is important that members of Parliament are aware of the problems with the new Ofsted framework. The NUT drafted an EDM, which was tabled in Parliament on 9 February. Please go to www.teachers.org.uk/ofsted to email your MP and ask them to sign EDM 845 "Ofsted's new inspection framework for schools".

Let us know your views

If your Ofsted inspection paints a picture of your school that you don't recognise, we want to know. Please contact your NUT association/division secretary or your regional office. Also, please keep your views coming to inspections@nut.org.uk



Christine Blower, General Secretary of the National Union of Teachers, said:

"The NUT is determined to raise members' concerns with Ofsted. We want a school evaluation system that supports schools, rather than punishing them. Ofsted has made it absolutely clear that a complaint by a school against unfair judgements or the conduct of inspectors will not be detrimental to the school. If your Ofsted inspection paints a picture of your school that you don't recognise, we want to know."

Our aim – one union for all teachers

Join the NUT

www.teachers.org.uk

See your school representative

Just ring to join now

New members' joining hotlines

Records & subscriptions helpline

0845 300 1669
or **020 7380 6369**

0845 300 1666